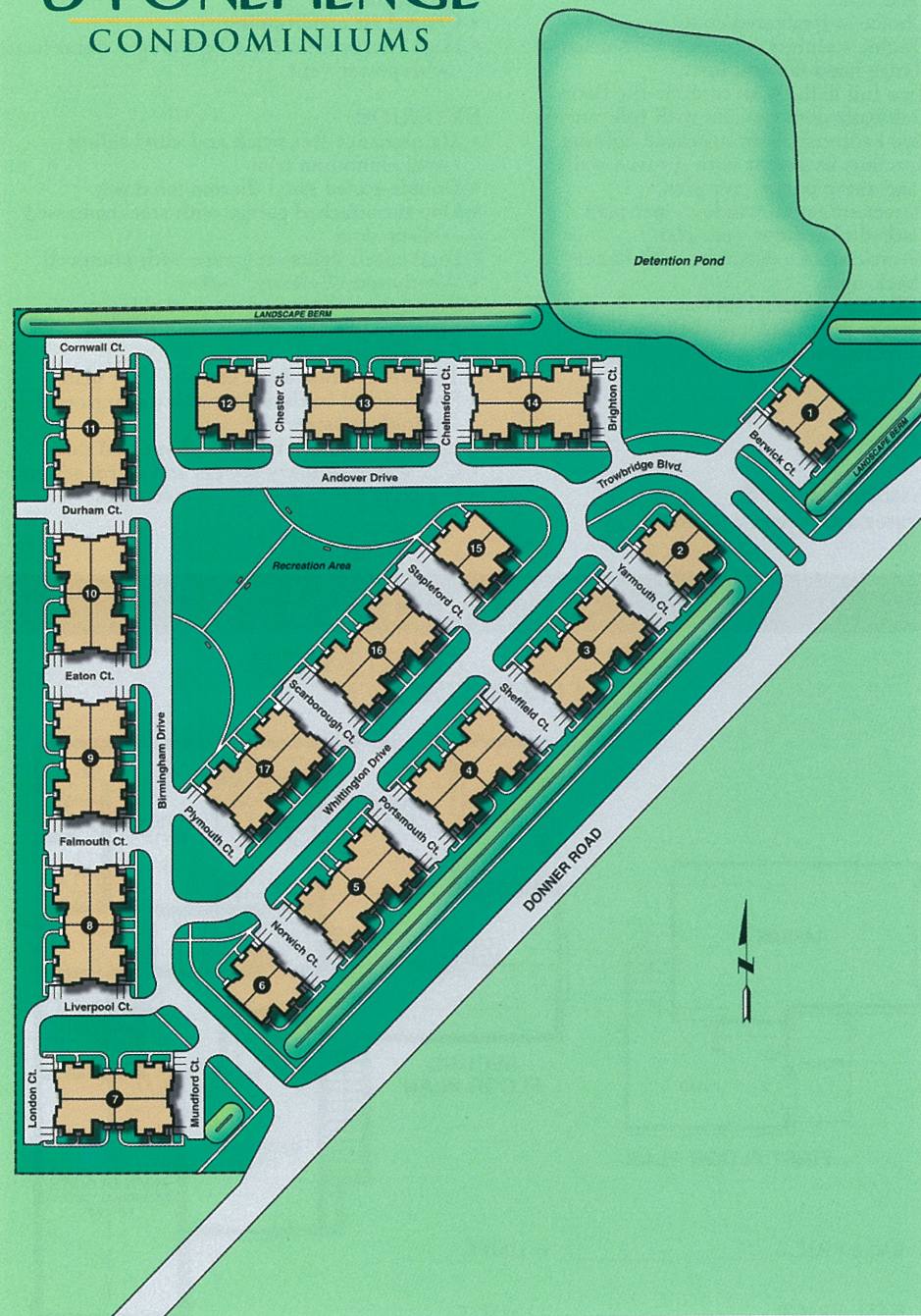


# STONEHENGE CONDOMINIUMS



Site Plan is an artist's conception, may vary in construction.



Located on the northeast corner of Donner and Cotton Roads.

#### ANCHOR BAY PUBLIC SCHOOLS

1. Naldrett Elementary
2. Anchor Bay Middle School
3. Anchor Bay High School

#### SHOPPING CONVENIENCE

4. Meijer, Target, Home Depot
5. Lakeside Shopping Corridor

#### NEARBY RECREATION

6. Chesterfield Crossing Cinemas
7. Cedar Glen Golf Club
8. Northbrook Golf Club
9. Salt River Golf Club
10. Lake St. Clair
11. Brandenburg Memorial Park & Boat Launch
12. Pollard Park, Baseball & Soccer

#### COMMUNITY SERVICES

13. Chesterfield Twp. Police Dept.
14. Chesterfield Twp. Fire Station
15. Chesterfield Twp. Municipal Offices
16. Chesterfield Twp. Library

#### MEDICAL

17. St. Joseph Walk-in Clinic
18. Mt. Clemens General Hospital
19. Henry Ford Medical Center



SALES INFORMATION  
586-949-4930



SALES INFORMATION 586-949-4930





Rendering is an artist's conception, may vary in construction.

### STANDARD FEATURES

#### INTERIOR

- Nailed, glued and screwed 3/4" flooring
- 1 3/4" oak interior doors with stained trim moulding
- First floor laundry with laundry tub and dryer vent - per plan
- Gas line to range and dryer
- Oak kitchen cabinets with choice of style and stain
- Choice of laminated countertops
- Double stainless steel sink with disposal
- Range hood fan and light
- Two full baths with ceramic tile floors
- Oak bathroom vanities with full mirrors
- Two bedrooms with overhead lighting
- Spacious basement with sprayed walls and sump pump - per plan
- Basement egress window - per plan
- Cathedral ceilings - per plan
- Electric smoke detectors with battery back-up
- 100 amp electrical service
- Garage drywalled and slick taped
- Carpeting and no wax vinyl flooring

#### ENERGY

- Tyvek house wrap
- 10" insulation with vapor barrier ceiling (R-30)
- 3 1/2" insulation with vapor barrier walls (R-13)
- Double common walls with 3 1/2" insulation in both sides
- Insulated steel entry doors
- 90% high energy efficient electronic ignition gas furnace
- Central air conditioning
- High energy efficient 40 gallon gas water heater with power vent

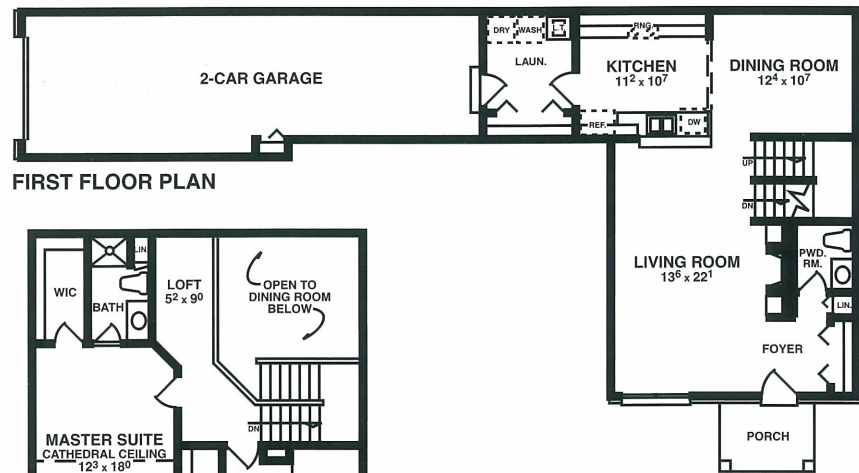
#### EXTERIOR

- Maintenance free brick and vinyl siding with aluminum trim
- Double-paned vinyl thermo windows
- One car attached garage with steel embossed roll-up door
- Dual coach lights on garage with photocell
- Weatherproof electric outlets
- Premium seal tab asphalt roof shingles
- Maintenance-free aluminum gutters
- Covered porches
- Treated exterior wood balcony - per plan
- Professional landscaping with underground sprinkler system
- Underground electric, telephone and cable
- City water, sanitary sewers and storm sewers
- Concrete paved streets and sidewalks

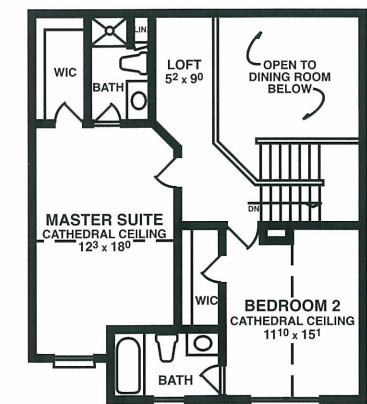
Association fee \$ \_\_\_\_\_  
Water and sewer included

## ARLINGTON

2 BEDROOM - 2 1/2 BATH TOWNHOUSE  
APPROX. 1600 SQ.FT.



FIRST FLOOR PLAN



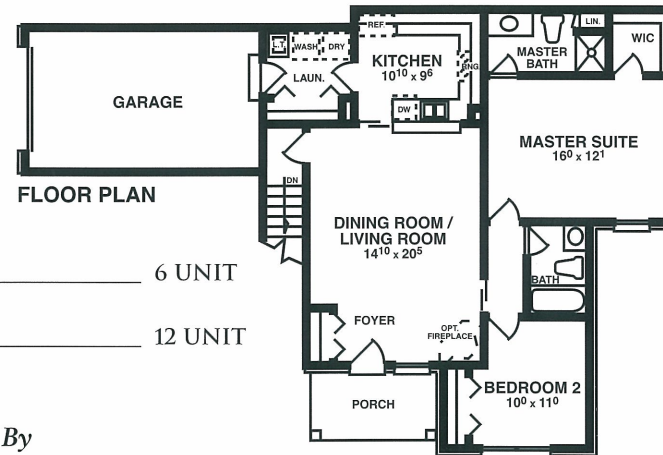
SECOND FLOOR PLAN

BASE PRICE \_\_\_\_\_ 6 UNIT

BASE PRICE \_\_\_\_\_ 12 UNIT

## BARCLAY

2 BEDROOM - 2 BATH RANCH  
APPROX. 1100 SQ.FT.



FLOOR PLAN

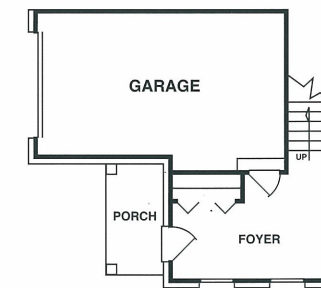
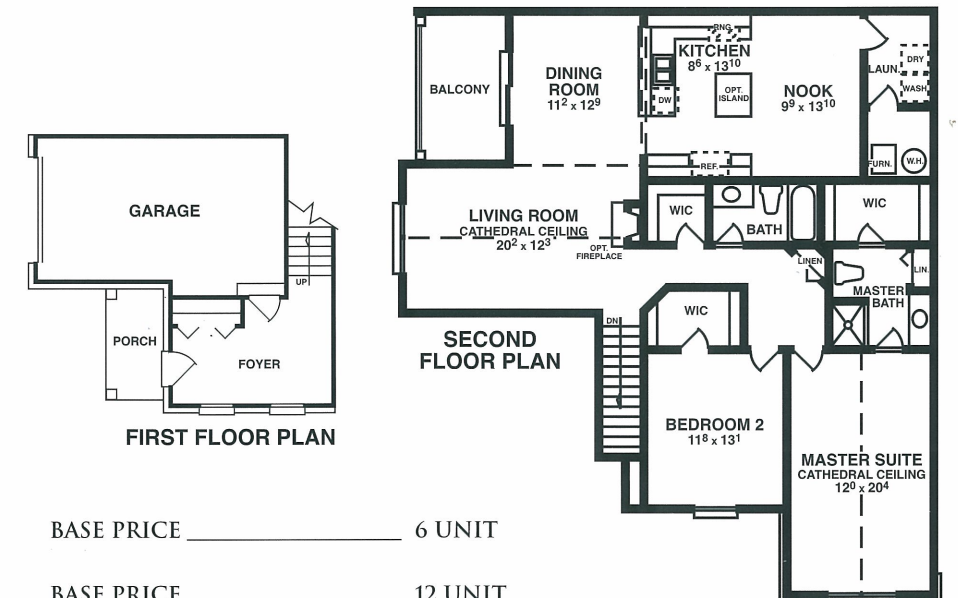
BASE PRICE \_\_\_\_\_ 6 UNIT

BASE PRICE \_\_\_\_\_ 12 UNIT



## COVINGTON

2 BEDROOM - 2 BATH RANCH  
APPROX. 1750 SQ.FT.



FIRST FLOOR PLAN

SECOND FLOOR PLAN

BASE PRICE \_\_\_\_\_ 6 UNIT

BASE PRICE \_\_\_\_\_ 12 UNIT